



NEW

Multipin



Complete air-to-vacuum instrumentation connectivity

## Features

- UHV compatible materials
- Ultra-compact design
- UHV temperature rated to 350°C
- MIL-DTL-83513
- Kapton® insulated UHV ribbon cable
- Air Side and Vacuum Side Connectors available
- Two standard vacuum mounting styles
- Custom feedthrough configurations available upon request

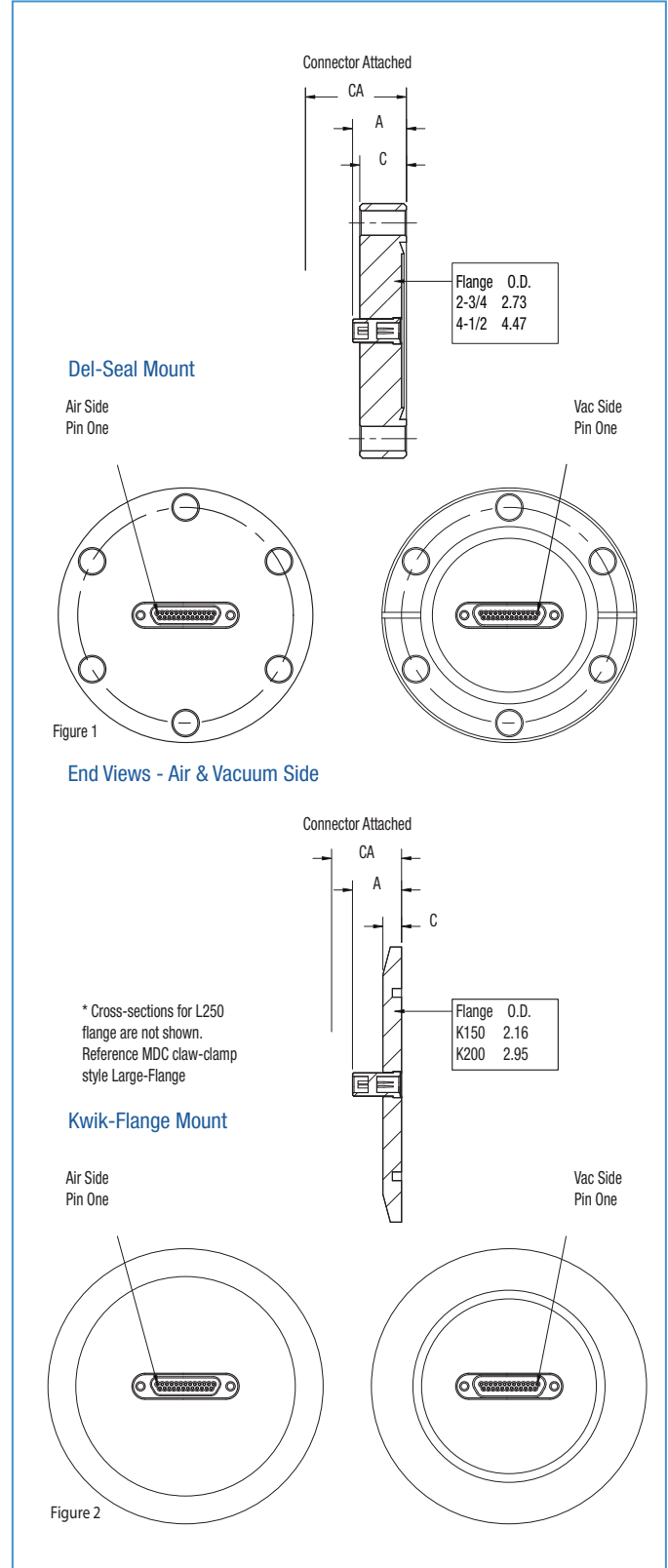
## Specifications

<b>Voltage</b> <sup>1</sup>	300 VDC maximum
<b>Current</b>	10 Amperes maximum at 20°C
<b>Per Pin Amperage</b>	10 Amps per Pin
<b>Material</b>	
Shell	Stainless steel
Pins	Be-Cu alloy, gold plated
Insulation / Seal	Ceramic
<b>Vacuum Range</b> UHV / HV	1x10 <sup>-10</sup> Torr / 1x10 <sup>-8</sup> Torr
<b>Temperature Range</b> <sup>2</sup>	
Del-Seal™ Mounted Feedthrough	-200°C to 350°C
Kwik-Flange™ Mounted Feedthrough	-20°C / 150°C
Air Side Connector	-55°C to 80°C
Vacuum Side Connector	-200°C to 250°C
<b>Dimensions</b>	Reference only, subject to change

<sup>1</sup> See **INTENDED OPERATING CONDITIONS** in introductory section.

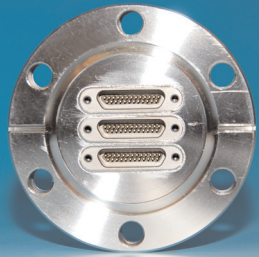
<sup>2</sup> Overall assembly ratings must be adjusted to that of the lowest rated component.

## ULTRAHIGH & HIGH VACUUM SERIES





### Del-Seal™ CF



NO. PINS	CF FLANGE	FIG.	A	C	CA	DRAWING REFERENCE	PART NUMBER	PRICE \$
9	2.73 DS	1	.58	.50	.81	1166901	9162001	620
15	2.73 DS	1	.58	.50	.81	1167001	9162002	650
25	2.73 DS	1	.58	.50	.81	1167101	9162003	710
51	2.73 DS	1	.58	.50	.81	1167201	9162004	930
100	4.47 DS	1	.69	.68	.93	1167301	9162005	1430

NEW

Multipin

### Kwik-Flange™ KF



NO. PINS	KF FLANGE	FIG.	A	C	CA	DRAWING REFERENCE	PART NUMBER	PRICE \$
9	K150	2	.53	.20	.75	1166401	9163001	620
15	K200	2	.53	.20	.75	1166501	9163002	650
25	K200	2	.53	.20	.75	1166601	9163003	710
51	K200	2	.53	.20	.75	1166701	9163004	930
100	L250	-	.53	.47	.75	1167801	9163005	1430

\* Cross-sections for L250 flanges are not shown. Reference MDC claw-clamp style Large-Flange™.

### Accessories



ACC. TYPE	WIRES/LENGTH	SECTION REF.	DRAWING REFERENCE	PART NUMBER	PRICE \$
AIR SIDE CONNECTOR	9/24	9.1	1164801	9921023	50
AIR SIDE CONNECTOR	15/24	9.1	1164901	9921024	60
AIR SIDE CONNECTOR	25/24	9.1	1165101	9921025	90
AIR SIDE CONNECTOR	51/24	9.1	1165401	9921026	150
AIR SIDE CONNECTOR	100/24	9.1	1165501	9921027	290
VACUUM SIDE CABLE KIT	9/24	9.1	1165601	9921031	200
VACUUM SIDE CABLE KIT	15/24	9.1	1165701	9921032	280
VACUUM SIDE CABLE KIT	25/24	9.1	1165901	9921033	375
VACUUM SIDE CABLE KIT	51/24	9.1	1166201	9921034	455
VACUUM SIDE CABLE KIT	100/24	9.1	1166301	9921035	825

ACC. TYPE	MATERIAL	DIM	QTY PKG	DRAWING REFERENCE	PART NUMBER	PRICE \$
INSTALL KIT	CU GASKET/HEX BOLTS	2.73 DS	1EA	1116501	9912452	20
INSTALL KIT	CU GASKET/HEX BOLTS	4.47 DS	1EA	1116701	9912454	25
INSTALL KIT	CTR RING/ASSY & CLAMP	K200	1EA	1117901	9913420	18
INSTALL KIT	CTR RING/ASSY & CLAMP	K200	1EA	1118001	9913430	27
INSTALL KIT	CTR RING/ASSY & CLAMP	L250	1EA	1118101	9913440	39